



M/V BRAVEST CHARTER INFORMATION

CRUISE IN LUXURY!

FIRST CLASS SERVICE IN AN EXTRAORDINARY SETTING

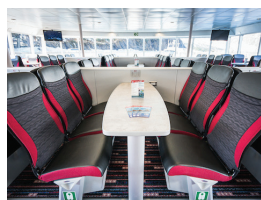
The Bravest joined the Phillips Cruises fleet in May 2019. Averaging 32 knots while underway, this 127-foot, high-speed catamaran holds 286 passengers on two decks, which are enclosed and heated with an inside seat at a table for every passenger on board. Monitors display the route map on both passenger decks making it easy for guests to follow along as we explore Prince William Sound. All tables have USB charging ports available. The M/V Bravest will be operating the 26 Glacier Cruise and is available for private charter service.

M/V BRAVEST CAPACITY 127 ft (39 m) | 37mph | 32 kn (59 kph) | 286 Guests + Crew
ADA Limited | Restroom Equipped



MAIN DECK:

The main deck has large panoramic windows for guests seated inside to take in the view. Outside, there are several spacious viewing areas. Due to our ability to cruise quickly, the bow doors are generally opened only when the vessel has reduced speed or is stopped for viewing glaciers or wildlife. The aft deck is accessible at any time. The bar, galley, and gift shop are located on the main deck. Five of the nine restrooms on board are located on the main deck.



SECOND DECK:

Ample seating is strategically arranged to allow all guests a terrific view. The second deck features a wrap-around deck, along with an aft observation deck. The wheelhouse, located on the second deck is divided from the guest seating area by a glass partition which allows guests to observe the Captain as he guides the Bravest through the narrow fjords to the face of the tidewater glaciers. Four restrooms can be found on the second deck.



Begin your event with a toast to your success and celebrate with your team aboard a first class catamaran by Phillips Cruises & Tours.

OUR CHARTERS

- Dedicated team from start to finish.
- Transportation and catering options available.
- Complimentary coffee, hot tea, and ice water.
- Hosted bar or cash bar service tailored to your needs.



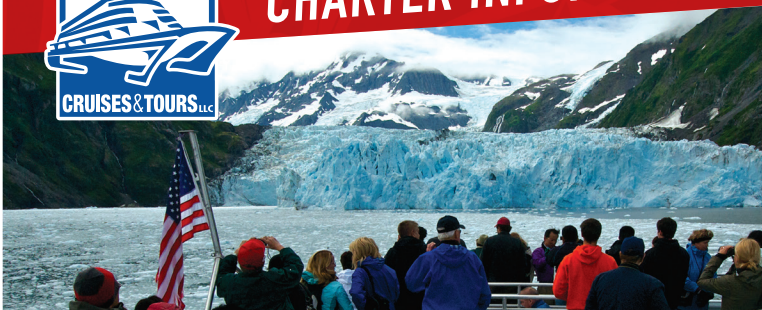
LISA KRUSE
Director Sales and Marketing
lkruse@26glaciers.com • 907-265-5827

www.26glaciers.com
519 W Fourth Ave
Anchorage, AK 99501





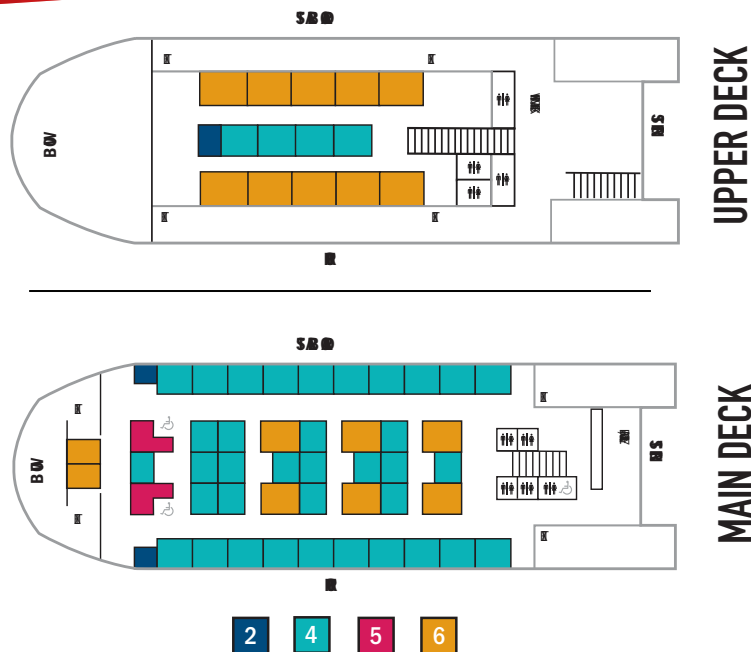
M/V BRAVEST CHARTER INFORMATION



The M/V Bravest carries 286* passengers and has two decks which are enclosed and heated. This vessel is ideal for groups looking for a special event that guarantees mountains, glaciers and spectacular scenery.

STATS

Operates | 26 Glacier Cruise
Year Built | 1996, Derektor Shipyard, Mamaroneck, NY
Refit | 2019 at Yank Marine, Tuckahoe, NJ
Designed by | Nigel Gee and Associates, Southampton, England
Hull Material | Aluminum
Vessel Length | 38.7 m (127') ft, Catamaran
Vessel Beam | 10 m (33') ft
Draft | 1.8 Meters (6') Feet
Capacities | 4,000 gals fuel, 330 gals potable water
***Seating Capacity** | 284 seats + 2 ADA accessible areas
Coast Guard Licensed Capacity | 300 Passengers + Crew
Interior Cabin Spaces | 2 Levels
Exterior Deck Spaces | 2 Levels
Cruising Speed | 32 knots / 36 mph
Engine Fuel | #2 Marine Diesel
Number of Engines | 2
Engines | MTU16V4000M64
Wheelchair Accessible | Yes
Upper Deck Seating | 78 seats
Upper Deck Tables | 1 x 2, 4 x 4, and 10 x 6 seats
Main Deck Seating | 204 seats + 2 ADA accessible area
Main Deck Tables | 2 x 2, 36 x 4, 2 x 5, and 8 x 6 seats
Total | 63 tables to accommodate 286 guests
Restrooms | 9 total, 4 on the upper deck, 5 on the main deck
Smoke-free vessel



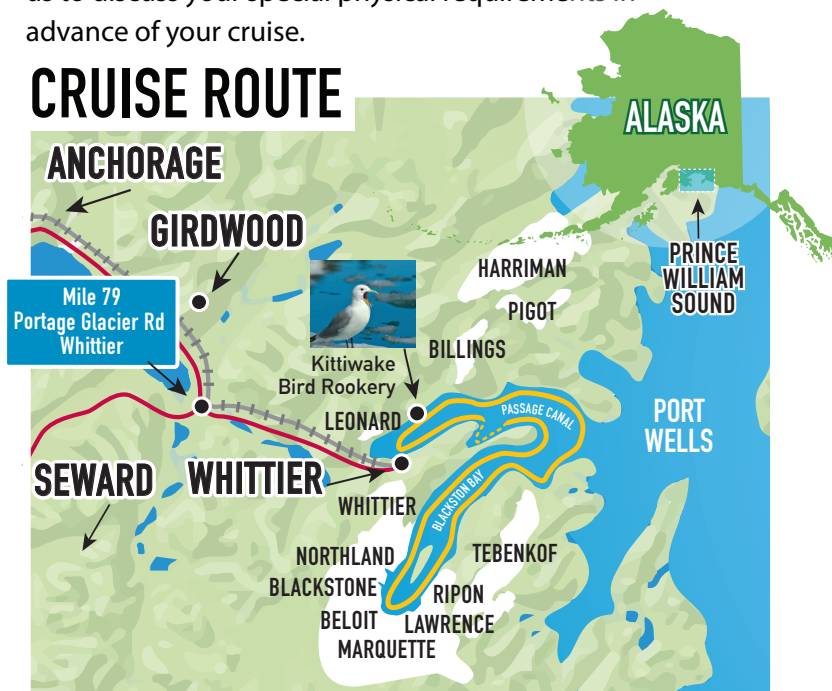
CHARTER SERVICE

Explore the beauty of Blackstone Bay, home to seven glaciers including tidewater glaciers. Watch for curious otters, whales, steller sea lions and birds. Contact us to create a custom route.

ADA ACCESSIBILITY

The M/V Bravest can easily accommodate most guests who require the use of a wheelchair during the cruise. Please contact us to discuss your special physical requirements in advance of your cruise.

CRUISE ROUTE



"We look forward to making your Alaska glacier cruise experience spectacular."

Lisa Kruse,
Director Sales & Marketing

